

INTRODUCTION

The HCPC has assessed the length of time that UK route registrants remained registered for following their first registration. Registrants who came through the UK route must have completed an approved training course in a UK institution. This analysis is hoped to contribute to wider workforce planning efforts.

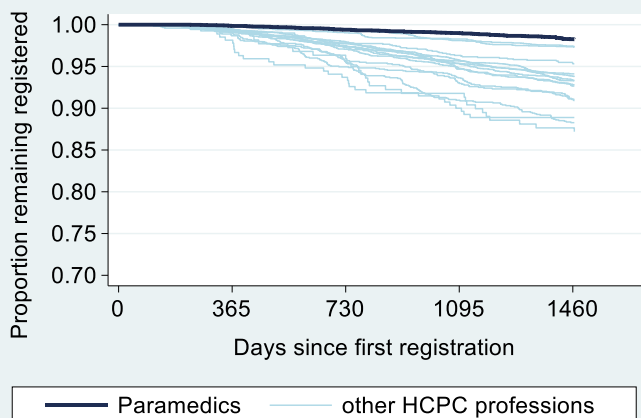
METHODS

All new UK route Paramedics who made their first registration between 01 June 2013 and 31 May 2017 were included in the analysis and their registration status at least four years later determined (n=5,314). The Kaplan-Meier method was used to estimate the percent remaining registered and the corresponding 95% confidence intervals for those estimates.

RESULTS

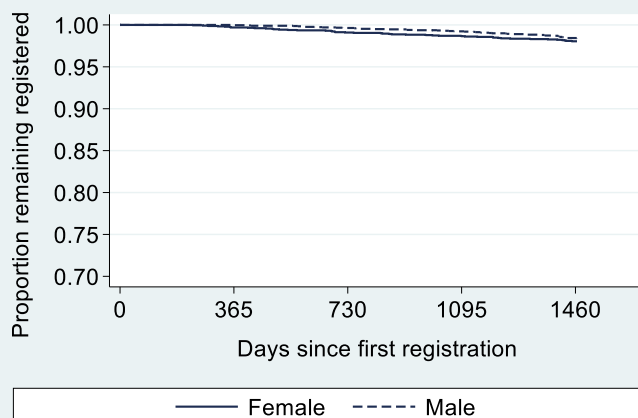
Overall retention

After two years 99.4% (95% CI: 99.2 to 99.6) of new Paramedics remained on the HCPC register and after four years 98.3% (95% CI: 97.9 to 98.6) remained registered.



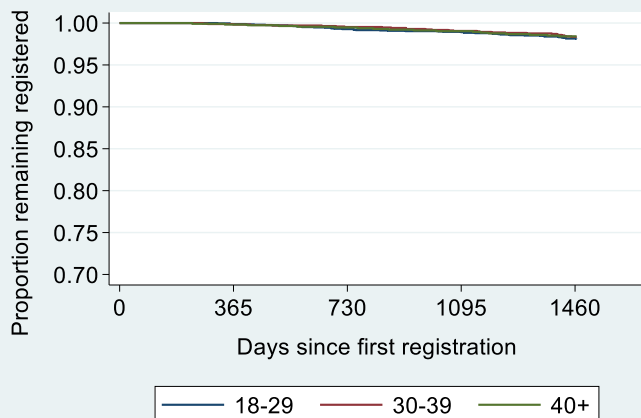
Gender / Sex

There was no meaningful difference between the proportions of females (98.1%) and of males (98.4%) remaining registered after four years. The majority of new Paramedic registrants were male (57%).



Age

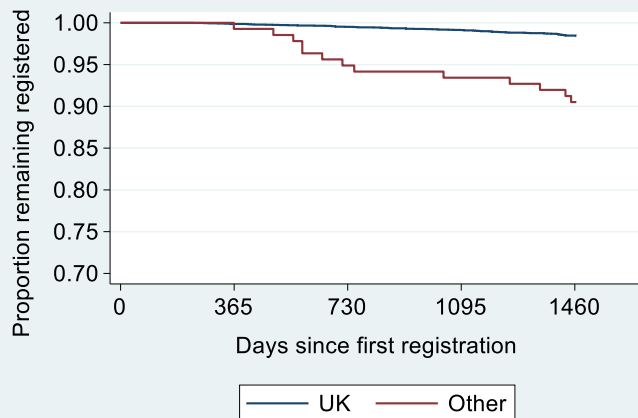
There was no differences in retention rates between the age groups at first registration. The majority (47%) of new Paramedic registrants were aged 18-29, with 32% aged 30-39 and 21% aged 40+.



Nationality

Retention varied considerably by nationality though UK nationality was by far the largest group:

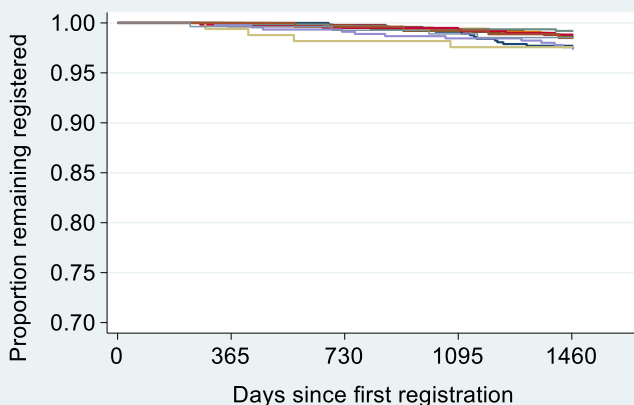
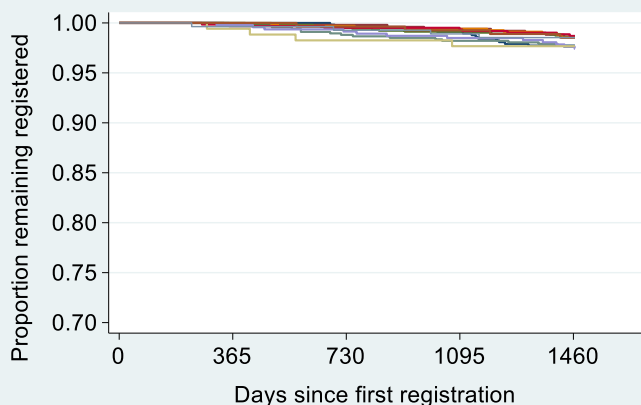
- UK = 98.5% retention (97% of registrants)
- Other = 90.5% (3% of registrants)



Location of training course provider

Retention rates varied little between locations of training course providers with just a 2.4% gap between the location with the highest rate (Northern Ireland, 100%) and the locations with the lowest rate (London, South West, 97.6%).

Restricting the analysis of training provider location to new UK route registrants of UK nationality made very little difference due to the very high levels of UK nationality.



Location of institution providing qualification used for registration	n	% total	% UK nationality	Retention: all nationalities		Retention: UK nationality only	
				%	95% CI	%	95% CI
North East & Yorkshire	573	10.8	99.1	97.7	96.1 to 98.7	97.7	96.1 to 98.7
North West	508	9.6	97.6	98.6	97.1 to 99.3	98.6	97.1 to 99.3
Midlands	1,027	19.4	97.7	98.6	97.7 to 99.2	98.7	97.8 to 99.3
East of England	683	12.9	98.2	98.5	97.3 to 99.2	98.5	97.2 to 99.2
London	670	12.7	93.7	97.6	96.1 to 98.5	99.2	98.1 to 99.7
South East	615	11.6	97.4	98.7	97.4 to 99.4	98.8	97.6 to 99.4
South West	465	8.8	97.4	97.6	95.8 to 98.7	97.6	95.7 to 98.7
Wales	172	3.3	95.9	97.7	93.9 to 99.1	97.6	93.7 to 99.1
Scotland	270	5.1	98.2	98.5	96.1 to 99.4	98.5	96.0 to 99.4
Northern Ireland	31	0.6	93.6	100	-	100	-
UK-wide providers	273	5.2	100	98.5	96.1 to 99.5	98.5	96.1 to 99.5

CONCLUSIONS

The vast majority of new UK route Paramedics remained on the HCPC register four years after their first registration with around 1 in 59 having left by then.

The greatest variation was observed in nationality, with UK route registrants of non-UK nationalities having lower retention rates than UK route registrants of UK nationality.

However, the vast majority of new registrants were of UK nationality meaning the lower retention rates for non-UK nationalities had little effect on the overall figures.