

# HCPC Diversity Data Report 2021: radiographers

## Introduction

The Health and Care Professions Council (HCPC) aims to be recognised as an organisation that actively upholds and promotes best practice in equality, diversity and inclusion. Improving the quantity and quality of our diversity data is an important step towards achieving this aim.

Between December 2020 and March 2021, we collected diversity data in a voluntary survey from 51,710 registrants across 15 health and care professions. This represents 18% of the HCPC Register and a three-fold increase in responses as compared with the 2019/20 survey.

This factsheet provides the key EDI information for the radiographers and how the demographics of this group compare to the demographics of HCPC registrants overall.



Profession:  
radiographers



Total registered radiographers:  
36,924<sup>1</sup>



Number of radiographers who  
responded to the survey:  
5,933

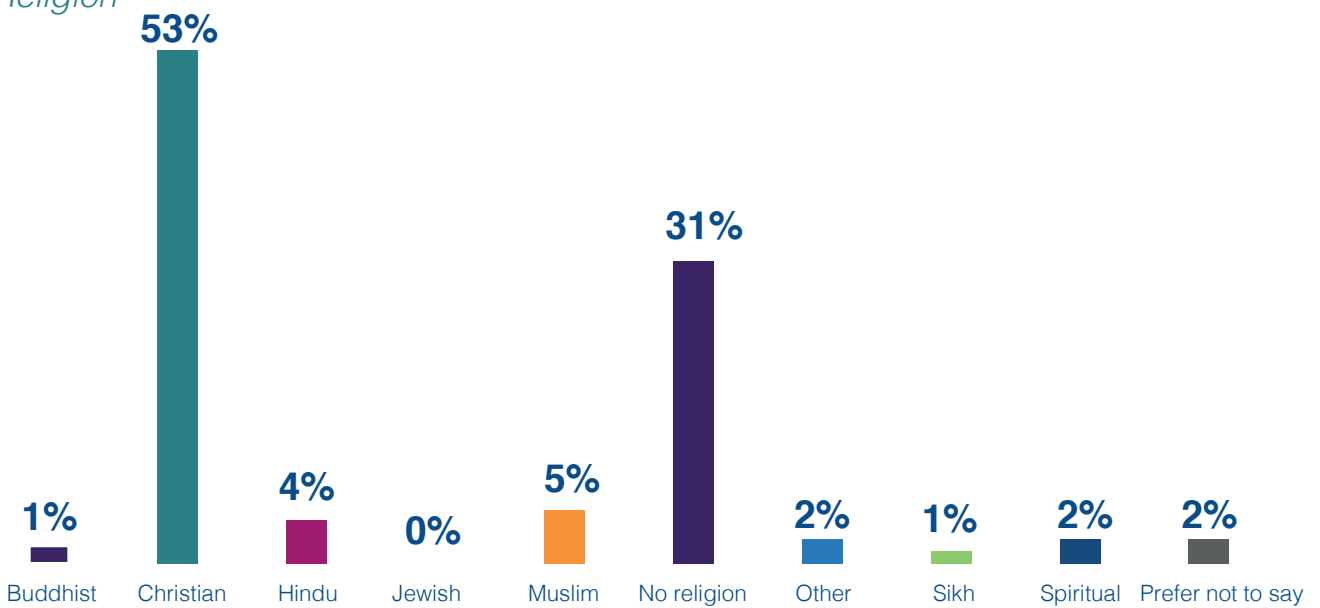
## Key findings

- Radiographers were the most ethnically diverse profession, except for biomedical scientist. 70% of radiographers were white, compared to an average of 83% across the professions.
- Radiographers had proportionally the most Christian registrants (53%), and were amongst the lowest for the proportion of registrants without a faith (31%).
- Radiographers were the least likely to have a secondary work setting (18%).
- Two-thirds (75%) of radiographers work in NHS Acute/ hospital/ secondary care.

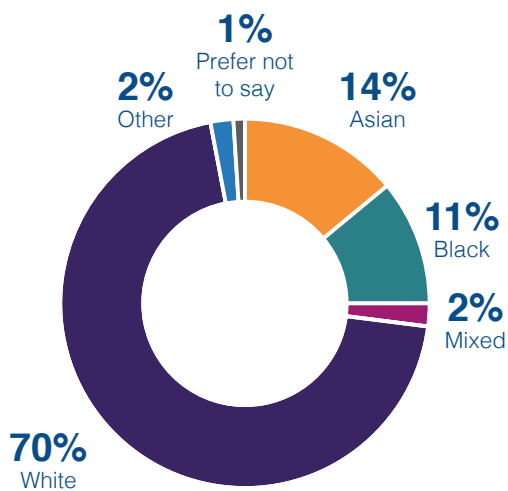
1. Total taken from age group data.

# Radiographers - Key findings

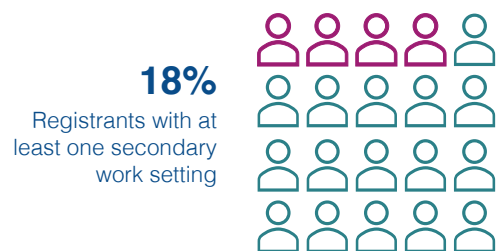
## Religion



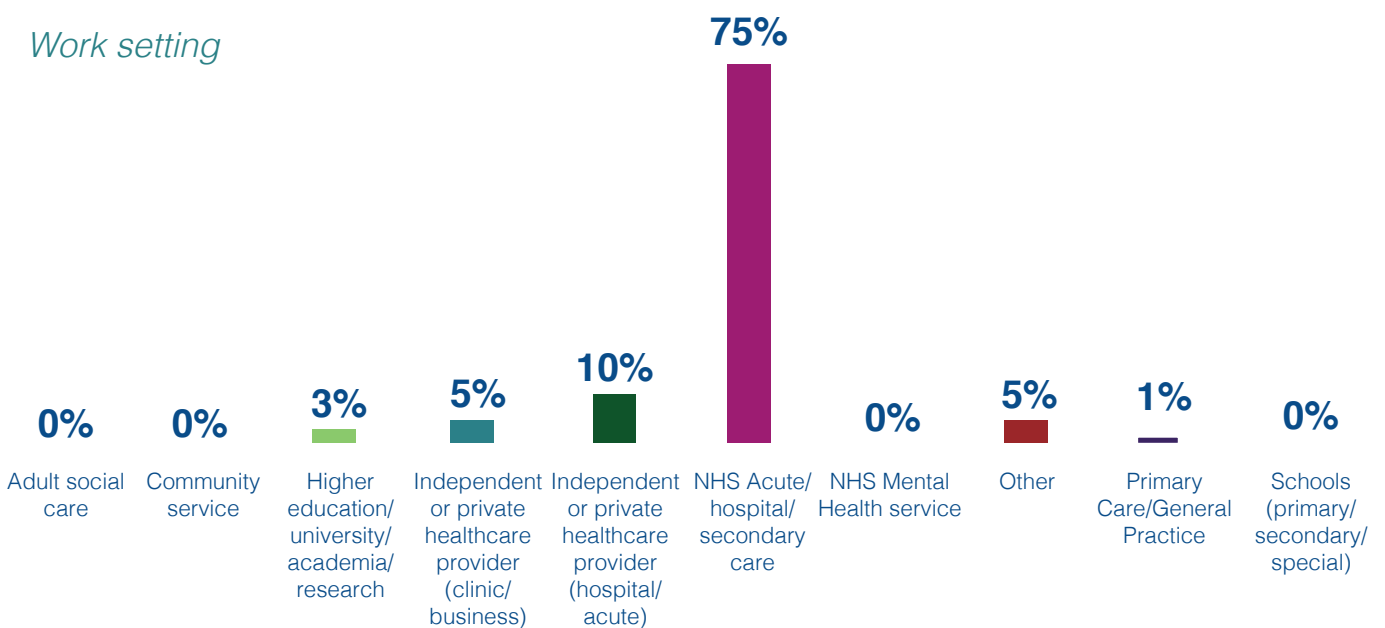
## Ethnicity



## Secondary work setting



## Work setting



## Age

Count and proportion of respondents by age group:

	Under 25		25-34 years		35-44 years		45-54 years		55-64 years		65 and over		Average age
	Count	%	Count	%	Count	%	Count	%	Count	%	Count	%	
<b>Radiographers</b>	2,363	6	12,037	33	9,732	26	6,740	18	5,110	14	942	3	40
<b>All professions</b>	11,853	4	78,796	27	84,390	29	65,492	23	40,694	14	7,956	3	42

## Disability

Count and proportion of respondents by disability:

	Disabled		Not disabled		Prefer not to say	
	Count	%	Count	%	Count	%
<b>Radiographers</b>	407	7	5,443	92	46	1
<b>All professions</b>	4,188	8	47,005	91	517	1

## Ethnicity

Count and proportion of respondents by ethnic origin:

	Asian		Black		Mixed		White		Other		Prefer not to say	
	Count	%	Count	%	Count	%	Count	%	Count	%	Count	%
<b>Radiographers</b>	826	14	659	11	117	2	4,133	70	109	2	52	1
<b>All professions</b>	3,993	8	2,368	5	1,245	2	42,755	83	890	2	458	1

## Gender

Count and proportion of respondents by gender:

	Woman		Man		Other		Prefer not to say	
	Count	%	Count	%	Count	%	Count	%
<b>Radiographers</b>	4,351	74	1,514	26	14	0	17	0
<b>All professions</b>	39,146	76	12,175	24	174	0	7	0

Count and proportion of responses to “Do you consider yourself to fall under the protected characteristic of ‘pregnancy & maternity’, as per the Equality Act 2010?”

	Yes		No		Prefer not to say	
	Count	%	Count	%	Count	%
<b>Radiographers</b>	453	8	5,360	91	83	1
<b>All professions</b>	3,098	6	48,088	93	529	1

## Religion

Count and proportion of respondents by religion or belief:

	Buddhist	Christian	Hindu	Jewish	Muslim	No religion	Other	Sikh	Spiritual	Prefer not to say
<b>Radiographers</b>	1%	53%	4%	0%	5%	31%	2%	1%	2%	2%
<b>All professions</b>	1%	44%	2%	1%	3%	39%	3%	1%	4%	3%

## Sexual orientation

Count and proportion of respondents by sexual orientation:

	Lesbian, Gay or Queer (LGQ) <sup>2</sup>		Heterosexual		Other		Prefer not to say	
	Count	%	Count	%	Count	%	Count	%
<b>Radiographers</b>	217	4	5,396	92	159	3	124	2
<b>All professions</b>	2,254	4	46,558	90	1,804	3	1,094	2

## Caring responsibilities

Count and proportion of respondents by caring responsibility:

	Yes		No		Prefer not to say	
	Count	%	Count	%	Count	%
<b>Radiographers</b>	1,910	32	3,881	66	105	2
<b>All professions</b>	18,351	35	32,746	63	617	1

## Country of work

Count and proportion of respondents by country of work:

	England		Northern Ireland		Scotland		Wales		Other	
	Count	%	Count	%	Count	%	Count	%	Count	%
<b>Radiographers</b>	4,557	77	187	3	431	7	261	4	460	8
<b>All professions</b>	42,169	82	1,348	3	3,798	7	2,302	4	2,093	4

2. The term "LGQ" is used throughout the report to represent the categories: Gay Man, Gay woman/lesbian, Queer, and Prefer to self describe (where gay or queer or lesbian was indicated). This was used to ensure data remain unidentifiable, particularly where small cell counts were noted.

## Work setting

Proportion of respondents by primary work setting:

Work Setting	Radiographers	All professions
Adult social care	0%	2%
Community service	0%	9%
Higher education/university/academia/research	3%	3%
Independent or private healthcare provider (clinic/business)	5%	11%
Independent or private healthcare provider (hospital/acute)	10%	3%
NHS Acute/ hospital/ secondary care	75%	35%
NHS Mental Health service	0%	6%
Other	5%	10%
Primary Care/ General Practice	1%	2%
Schools (primary/secondary/special)	0%	4%

Count and proportion of respondents by work pattern:

	Full-time		Part-time		Flexible hours/ Zero Hour		Not currently working		Prefer not to say	
	Count	%	Count	%	Count	%	Count	%	Count	%
<b>Radiographers</b>	4,061	69	1,476	25	243	4	90	2	26	0
<b>All professions</b>	32,236	62	15,825	31	2,126	4	1,200	2	332	1

## Education

Count and proportion of respondents by type of schooling:

	State run or funded (all types)		Independent (all types)		Prefer not to say		I don't know	
	Count	%	Count	%	Count	%	Count	%
<b>Radiographers</b>	4,740	80	894	15	128	2	134	2
<b>All professions</b>	42,523	82	7,931	15	761	1	504	1

### *Parental or guardian education attainment*

Count and proportion of responses to the question “when you were 18, had any of your parents or guardians completed a university degree course of equivalent (e.g., BA, BSC, or higher)?”

	Yes		No		I don't know		Prefer not to say	
	Count	%	Count	%	Count	%	Count	%
<b>Radiographers</b>	1,786	30	3,944	67	98	2	68	1
<b>All professions</b>	17,949	35	32,719	63	639	1	409	1